



Clinton Nature Preserve Trail Map

www.CelebrateDouglasCounty.com

8720 Ephesus Church Road, Villa Rica, GA. 30180 (770) 920-7129

TRAIL INFORMATION

Trail Color	Milage	Difficulty	Marker
Blue Trail	.81 mi.	Easy	Blue 200-217
Red Trail	4.34 mi.	Easy to Difficult	Red 200-226
Yellow Trail	1.2 mi.	Easy	Yellow 200-243
Orange Trail	3.0 mi.	Moderate to Difficult	Orange 200-290
Green Trail	3.5 mi.	Moderate to Difficult	Green 200-299
Black Trail	1.6 mi.	Moderate to Difficult	Black 200-248

Douglas County Parks and Recreation
Hiking Guidelines

Contact information:
Guest Services: (770) 920-7129
In the event of an emergency always call E911

If you get lost while hiking stay at your current location and contact guest services.
Use of google maps or what3words can be used to assist (recommend using one of these)

Avoid hiking alone, using a buddy system is safer.

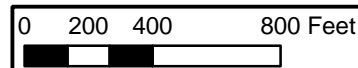
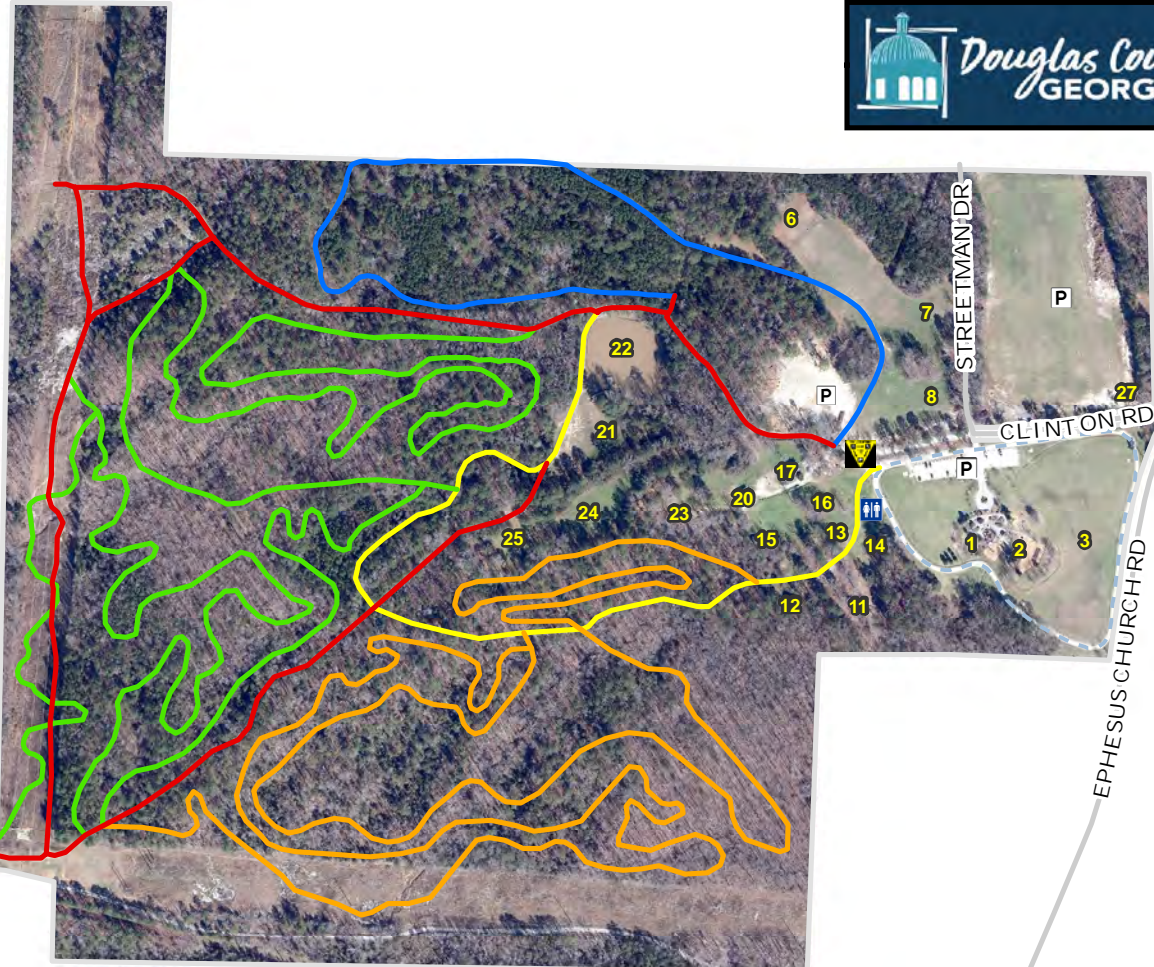
Tell a freind where you are hiking and when you will return.
Check in with them when your hike is complete.

Take plenty of water and snacks and basic first aid kit.

Do not hike at dark.

Stay on marked trails.

Know your limits and physical abilities.
Always take your time and watch your step to avoid injury.



P Parking Trail Head Facilities Walking Track

- | | | |
|--------------------|----------------|-----------------------|
| 1 Shelter 1 | 12 Ampitheater | 21 Lake Activity Area |
| 2 Playground | 13 Shelter 2 | 22 Lake |
| 3 Infield Area | 14 Shelter 3 | 23 Camp Area 2 |
| 6 K9 Training Area | 15 Shelter 4 | 24 Camp Area 3 |
| 7 Festival Area 1 | 16 Bunkhouse | 25 Camp Area 4 |
| 8 Festival Area 2 | 17 Farm House | 26 Carnes House |
| 11 Camp Area 1 | 20 Barn | 27 Dumpster |